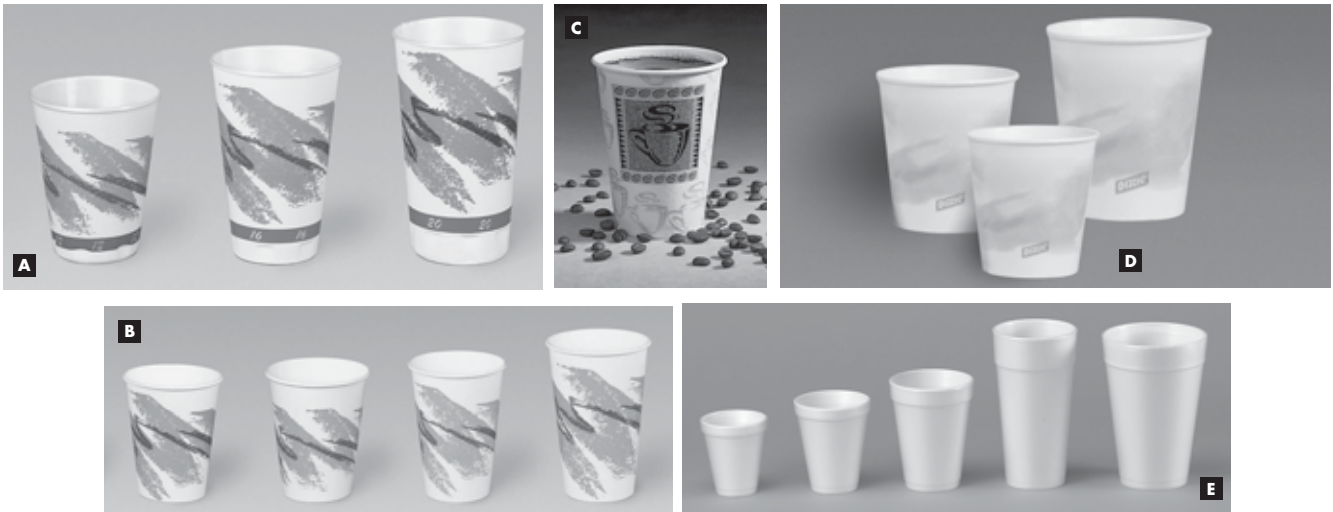


**FOOD SERVICE**



**FOAM CUPS - FOR HOT OR COLD USE**

ITEM NO.	MFG NO.	MFG	PRODUCT DESCRIPTION	PACKED
67544	4J4	DCC	4 OZ. FOAM CUP 20/50 CT <b>E</b>	1000/CS
675666	6J6	DCC	6 OZ. FOAM CUP 20/50 CT <b>E</b>	1000/CS
675888	8J8	DCC	8 OZ. FOAM CUP 40/25 CT <b>E</b>	1000/CS
6751010	10J10	DCC	10 OZ. FOAM CUP 40/25 CT <b>E</b>	1000/CS
6751212	12J12	DCC	12 OZ. FOAM CUP 40/25 CT <b>E</b>	1000/CS
6751216	12J16	DCC	12 OZ. FOAM CUP 40/25 CT <b>E</b>	1000/CS
6751416	14J16	DCC	14 OZ. FOAM CUP 40/25 CT <b>E</b>	1000/CS
67516161	16J16	DCC	16 OZ. FOAM CUP 40/25 CT <b>E</b>	1000/CS
6752016	20J16	DCC	20 OZ. FOAM CUP 20/25 CT <b>E</b>	500/CS
6752416	24J16	DCC	24 OZ. FOAM CUP 25/20 CT <b>E</b>	500/CS
67524204	24J24	DCC	24 OZ. FOAM CUP 25/20 CT <b>E</b>	500/CS
6753232	32J32	DCC	32 OZ. FOAM CUP 25/20 CT <b>E</b>	500/CS
67581	X8J	SWE	8 OZ TROPHY XL CUP, JAZZ 10/100 CT <b>A</b>	1000/CS
675123	X12J	SWE	12 OZ TROPHY XL CUP, JAZZ 10/100 CT <b>A</b>	1000/CS
675163	X16NJ	SWE	16 OZ TROPHY XL CUP, JAZZ 15/50 CT <b>A</b>	750/CS
675202	X20NJ	SWE	20 OZ TROPHY XL CUP, JAZZ 25/30 CT <b>A</b>	750/CS

**HOT CUPS**

ITEM NO.	MFG NO.	MFG	PRODUCT DESCRIPTION	PACKED
6752338	2338AC	DIX	MIRA-GLAZE POLYLINED, 8 OZ <b>D</b>	1000/CS
6752342	2342AC	DIX	MIRA-GLAZE POLYLINED, 12 OZ <b>D</b>	1000/CS
6755338	5338CD	DIX	PERFECTOUCH, POLY COATED / INSULATED, 8 OZ <b>C</b>	1000/CS
6755342	5342CD	DIX	PERFECTOUCH, POLY COATED / INSULATED, 12 OZ <b>C</b>	1000/CS
6755356	5356CD	DIX	PERFECTOUCH, POLY COATED / INSULATED, 16 OZ <b>C</b>	1000/CS
675506	P506J	SWE	6 OZ PAPER HOT CUP, JAZZ DESIGN, 20/50'S <b>B</b>	1000/CS
6751002	P508J	SWE	8 OZ PAPER HOT CUP, JAZZ DESIGN, 20/50'S <b>B</b>	1000/CS
675510	P510J	SWE	10 OZ PAPER HOT CUP, JAZZ DESIGN, 20/50'S <b>B</b>	1000/CS
675512	P512J	SWE	12 OZ PAPER HOT CUP, JAZZ DESIGN, 20/50'S <b>B</b>	1000/CS
675516	P516J	SWE	16 OZ PAPER HOT CUP, JAZZ DESIGN, 20/50'S <b>B</b>	1000/CS
675520	P520J	SWE	20 OZ PAPER HOT CUP, JAZZ DESIGN, 20/50'S <b>B</b>	1000/CS



**FOOD SERVICE**



**COLD CUPS**

ITEM NO.	MFG NO.	MFG	PRODUCT DESCRIPTION	PACKED
675531	R53J	SWE	5 OZ PAPER COLD CUP, JAZZ DESIGN 30/100 CT <b>B</b>	3000/CS
67571	R7NJ	SWE	7 OZ PAPER COLD CUP, JAZZ DESIGN 20/100 CT <b>B</b>	2000/CS
675122	RP12SJ	SWE	12 OZ DOUBLE-POLY COLD CUP, JAZZ DESIGN 25/80 CT <b>B</b>	2000/CS
675161	RSP16NJ	SWE	16 OZ DOUBLE-POLY COLD CUP, JAZZ DESIGN 20/50 CT <b>B</b>	1000/CS
675221	RSP22NJ	SWE	22 OZ DOUBLE-POLY COLD CUP, JAZZ DESIGN 20/50 CT <b>B</b>	1000/CS
67558	58AC	DIX	PAPER, WAX COATED, 5 OZ <b>A</b>	2400/CS
675121	12FPAC	DIX	PAPER, POLY COATED, 12 OZ <b>A</b>	2400/CS
675016	16PAC	DIX	PAPER, POLY COATED, 16 OZ <b>A</b>	1200/CS

**TRANSLUCENT CUPS - FOR COLD USE**

ITEM NO.	MFG NO.	MFG	PRODUCT DESCRIPTION	PACKED
675050	C050	DIX	5 OZ COLD CUP, PLASTIC, TRANSLUCENT <b>C</b>	2400/CS
675120	C120	DIX	12 OZ COLD CUP, PLASTIC, TRANSLUCENT <b>C</b>	1000/CS
675525	5N25	DCC	5 OZ CONEX TRANSLUCENT COLD CUPS	2500/CS
626725	7N25	DCC	7 OZ CONEX TRANSLUCENT COLD CUPS	2500/CS
675925	9N25	DCC	9 OZ CONEX TRANSLUCENT COLD CUPS	2500/CS
6751025	10N25	DCC	10 OZ CONEX TRANSLUCENT COLD CUPS	2500/CS
67512	12SN	DCC	12 OZ CONEX TRANSLUCENT COLD CUPS	1000/CS
675141	14N	DCC	14 OZ CONEX TRANSLUCENT COLD CUPS	1000/CS
67516	16K	DCC	16 OZ CONEX TRANSLUCENT COLD CUPS	1000/CS
67520	20N	DCC	20 OZ CONEX TRANSLUCENT COLD CUPS	1000/CS

## FOOD SERVICE



## CUP LIDS

ITEM NO.	MFG NO.	MFG	PRODUCT DESCRIPTION	PACKED
6754001	4JL	DCC	TRANSLUCENT VENTED LID FOR 4J4 #4 10/100 CT <b>B</b>	1000/CS
67506	6JL	DCC	WHITE VENTED LID FOR 6J6 #6 10/100 CT <b>B</b>	1000/CS
67582	8JL	DCC	WHITE VENTED LID FOR 8J8 #8 10/100 CT <b>B</b>	1000/CS
675322	32JL	DCC	TRANSLUCENT VENTED LID FOR 32TJ32 #32 5/100 CT <b>B</b>	500/CS
67583	8UL	DCC	WHITE SIP THRU LID FOR 8J8 #8 10/100 CT <b>C</b>	1000/CS
675725	L7N25	DCC	CONNEX LIDS FITS 7N25	2500/CS
6759251	L9N25	DCC	CONNEX LIDS FITS 9N25	2500/CS
67510251	L10N25	DCC	CONNEX LIDS FITS 10N25	2500/CS
67514	L14N	DCC	CONNEX LIDS FITS 12SN, 14N	1000/CS
67524	L24TN	DCC	CONNEX LIDS FITS 16K, 20N	1000/CS
67581	DTLX8	SWE	8 OZ TRAVEL LID, LIFT & LOCK, WHITE, FITS X8J <b>A</b>	2000/CS
675122	DTLX12	SWE	12 OZ TRAVEL LID, LIFT&LOCK, WHITE, FITS X12J, X16NJ, X20NJ <b>A</b>	2000/CS
67595381	D9538	DIX	DOME LID FOR 8OZ HOT CUP <b>E</b>	1000/CS
6779542	D9542	DIX	DOME LID FOR 12-16OZ HOT CUP <b>E</b>	1000/CS
675914	914LSRD	DIX	LID FOR 12-22OZ PAPER COLD CUP	1200/CS

## STRAWS & STIRRERS

ITEM NO.	MFG NO.	MFG	PRODUCT DESCRIPTION	PACKED
677875	875W	SWEETHEART	PERMA-FLEX STRAWS WRAPPED WHITE 20/500 CT <b>F</b>	10000/CS
677551	HS551	DIXIE FOOD.	STIRRER ,COCKTAIL, 5.5", BOXED <b>D</b>	10000/CS
6777	JB7	DIXIE FOOD.	STRAW, JUMBO, 7.75", UNWRAPPED <b>H</b>	12500/CS
67771	JW7	DIXIE FOOD.	STRAW, JUMBO, 7.75", WRAPPED <b>G</b>	12000/CS



**FOOD SERVICE**



**CUTLERY**

ITEM NO.	MFG NO.	MFG	PRODUCT DESCRIPTION	PACKED
67751	GBX5FW	SWEETHEART	GUILDWARE FORK BOXED, WHITE 10/100 CT <b>A</b>	1000/CS
677611111	GBX6KW	SWEETHEART	GUILDWARE KNIFE BOXED, WHITE 10/100 CT <b>A</b>	1000/CS
67772	GBX7TW	SWEETHEART	GUILDWARE TEASPOON BOXED, WHITE 10/100 CT <b>A</b>	1000/CS
67782	GBX8SW	SWEETHEART	GUILDWARE SOUP SPOON BOXED, WHITE 10/100 CT <b>A</b>	1000/CS
67752	GDR5FK	SWEETHEART	GUILDWARE FORK BLACK, BULK <b>C</b>	1000/CS
67762	GDR6KN	SWEETHEART	GUILDWARE KNIFE BLACK, BULK <b>C</b>	1000/CS
67773	GDR7TS	SWEETHEART	GUILDWARE TEASPOON BLACK, BULK <b>C</b>	1000/CS
67720501	PTMWF-10		WHITE MEDIUM POLYPROPYLENE FORKS	1000/CS
67720511	PTMWS-10		WHITE MEDIUM POLYPROPYLENE SPOONS	1000/CS
67720521	PTMWK-10		WHITE MEDIUM POLYPROPYLENE KNIVES	1000/CS
6774002	CAM-FW		CAM-FW X-HVY WHITE 7 1/8" POLYSTYRENE FORKS	1000/CS
6774003	CAM-KW		CAM-KW X-HVY WHITE 7 1/8" POLYSTYRENE KNIVES	1000/CS
6771000	CAM-SW		CAM-SW X-HVY WHITE 7 1/8" POLYSTYRENE SPOONS	1000/CS
6772113	FM21	DIXIE FOOD.	HEAVY MEDIUM WEIGHT FORKS <b>B</b>	1000/CS
677721	KM21	DIXIE FOOD.	HEAVY MEDIUM WEIGHT KNIVES <b>B</b>	1000/CS
6777221	TM21	DIXIE FOOD.	HEAVY MEDIUM WEIGHT TEASPOONS <b>B</b>	1000/CS
6776111	K6BW	DART	MED. WEIGHT POLYPROPYLENE CUTLERY - KNIVES	1000/CS
677611	F6BW	DART	MED. WEIGHT POLYPROPYLENE CUTLERY - FORKS	1000/CS
67761111	S6BW	DART	MED. WEIGHT POLYPROPYLENE CUTLERY - TEASPOONS	1000/CS

**FOOD SERVICE**



**PAPER AND FOAM PLATES**

ITEM NO.	MFG NO.	MFG	PRODUCT DESCRIPTION	SOLD BY	PACKED
677709902	709902	DIXIE FOODSERVICE	PAPER PLATE MEDIUM LIGHT WEIGHT POLY 9" <b>A</b>	1000/CS	CS
6779	UX9AC	DIXIE FOODSERVICE	PAPER PLATE MEDIUM WEIGHT COATED 9"	1000/CS	CS
6771200	1200	PT	PAPER PLATE LIGHT UNCOATED 9"	1200/CS	CS
677436	40111	SPS	PAPER PLATE LIGHT UNCOATED 6"	1000/CS	CS
67791	SX9AC	DIXIE FOODSERVICE	PAPER PLATE HEAVY WEIGHT COATED 9" <b>B</b>	500/CS	CS
677119	C1H1CF	SWEETHEART	FUNDY PLATE 9" WHITE	12/100'S	CS
67716	CXJ1CF	SWEETHEART	FUNDY PLATE 6" WHITE	10/100'S	CS
6770105	RS105YW	SWEETHEART	FOAM PLATE 10" CENTER PIECE WHITE <b>C</b>	4/125'S	CS
6770099	FS9DPY	SWEETHEART	FOAM PLATE WHITE BASIX 9" <b>D</b>	4/125'S	CS
6770066	FS6BPY	SWEETHEART	FOAM PLATE WHITE BASIX 6" <b>D</b>	8/125'S	CS
6771015	80900	SP	FOAM PLATE FLAT WHITE 8 7/8"	500/CS	CS
677009	RS9DPYW	SWEETHEART	FOAM PLATE CENTER PIECE WHITE <b>C</b>	4/125'S	CS
6770061	RS6BPYW	SWEETHEART	FOAM PLATE CENTER PIECE 9" <b>C</b>	8/125'S	CS
677833	83900	SP	FOAM PLATE 3-COMPARTMENT 8 3/4"	500/CS	CS
6770990	SS9DPYJ	SWEETHEART	FOAM HEAVY WEIGHT PLATE SILENT SERVICE JAZZ 9"	4/125'S	CS
6770010	RS10CYC	SWEETHEART	FOAM COMPARTMENT PLATE CHAMPAGNE 10" CENTER PIECE	4/125'S	CS
6770091	RS9CYW	SWEETHEART	FOAM COMPARTMENT PLATE CENTER PIECE 9" <b>C</b>	4/125'S	CS
677012	FS12BN	SWEETHEART	FOAM BOWL WHITE BASIX 12 OZ <b>D</b>	8/125'S	CS
6770121	RS12BNW	SWEETHEART	FOAM BOWL CENTER PIECE WHITE 12 OZ <b>C</b>	8/125'S	CS



**FOOD SERVICE**



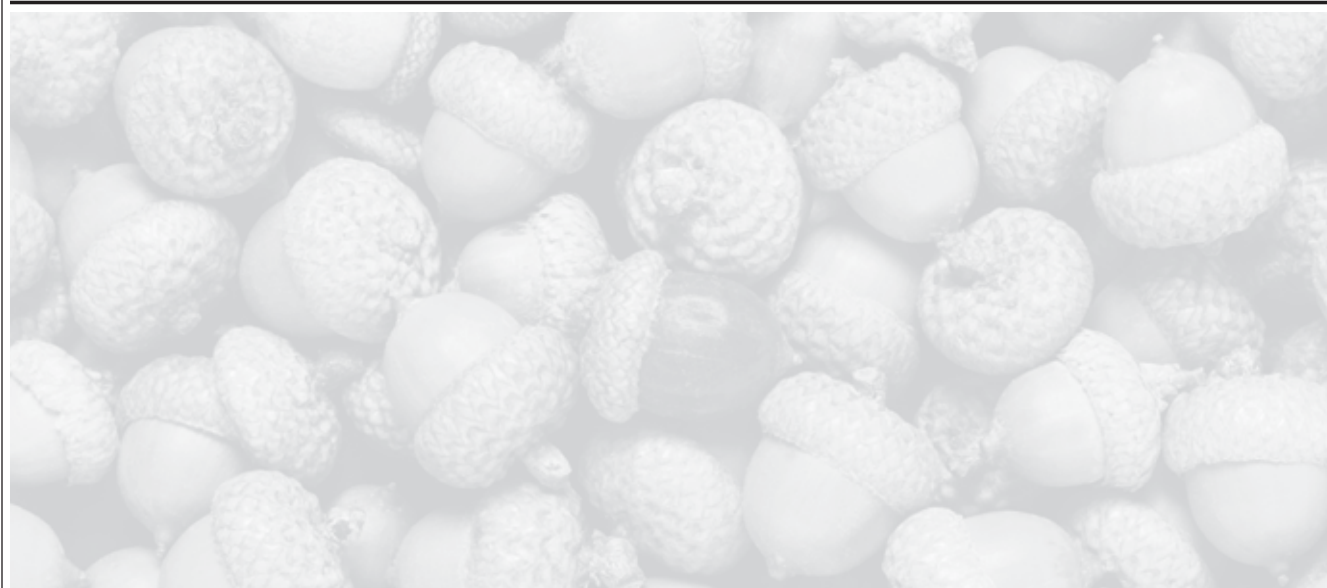
**A**



**B**

**FOOD CONTAINERS AND TRAYS**

ITEM NO.	MFG NO.	MFG	PRODUCT DESCRIPTION	SOLD BY	PACKED
677071	FBF7	SWEETHEART	PAPER SNACK TRAY UNPRINTED 7"X2 3/4"X4 1/2"	250/CS	CS
677081	FT08	SWEETHEART	PAPER FOOD TRAY UNPRINTED 8 OZ	1000/CS	CS
677061	FT06	SWEETHEART	PAPER FOOD TRAY UNPRINTED 6 OZ	1000/CS	CS
677051	FT5	SWEETHEART	PAPER FOOD TRAY UNPRINTED 5 LB	500/CS	CS
677041	FT04	SWEETHEART	PAPER FOOD TRAY UNPRINTED 4 OZ	1000/CS	CS
677031	FT3	SWEETHEART	PAPER FOOD TRAY UNPRINTED 3 LB	500/CS	CS
677021	FT2	SWEETHEART	PAPER FOOD TRAY UNPRINTED 2 LB	1000/CS	CS
677011	FT1	SWEETHEART	PAPER FOOD TRAY UNPRINTED 1 LB	1000/CS	CS
677091	FBF9	SWEETHEART	PAPER DINNER CARTON UNPRINTED	250/CS	CS
6751004	5T1	SWEETHEART	PAPER BUCKET UNWAXED WHITE UNPRINTED 83 OZ	100/CS	CS
677101	10T1M	SWEETHEART	PAPER BUCKET DOUBLE-WRAPPED BLUE MARBLE 165 OZ <b>A</b>	100/CS	CS
677300	KL300AC	DIXIE FOODSERVICE	KANT LEEK FOOD TRAY AURORA DESIGN 3 LB	500/CS	CS
67750	KL50AC	DIXIE FOODSERVICE	KANT LEEK FOOD TRAY AURORA DESIGN 1/2 LB <b>B</b>	1000/CS	CS
6778050	HD8050	DIXIE FOODSERVICE	HOT DOG TRAYS 8" MEDIUM WEIGHT FLUTED	3000/CS	CS
67775	HD8075	DIXIE FOODSERVICE	HOT DOG TRAYS 8" HEAVY WEIGHT FLUTED	3000/CS	CS
6770016	KH16AJ	SWEETHEART	FLEX STYLE HOT FOOD LID COMBINATION PACKS JAZZ 16 OZ	250/CS	CS
6770012	KH12AJ	SWEETHEART	FLEX STYLE HOT FOOD LID COMBINATION PACKS JAZZ 12 OZ	250/CS	CS



**FOOD SERVICE**

**FOOD SERVICE**



**FOOD CONTAINERS AND PORTION CUPS**

ITEM NO.	MFG NO.	MFG	PRODUCT DESCRIPTION	SOLD BY	PACKED
677055	UR55	SWEETHEART	TRANSLUCENT PORTION CUP 5.5 OZ PLASTIC	2500/CS	CS
677040	UR4	SWEETHEART	TRANSLUCENT PORTION CUP 4 OZ PLASTIC	2500/CS	CS
677020	UR2H	SWEETHEART	TRANSLUCENT PORTION CUP 2 OZ PLASTIC	2500/CS	CS
677010	UR1	SWEETHEART	TRANSLUCENT PORTION CUP 1 OZ PLASTIC	5000/CS	CS
677050	UR050	SWEETHEART	TRANSLUCENT PORTION CUP .5 OZ PLASTIC	5000/CS	CS
677550	550	SWEETHEART	PLEATED PAPER SOUFFLE 5.5 OZ	5000/CS	CS
677400	400	SWEETHEART	PLEATED PAPER SOUFFLE 4 OZ	5000/CS	CS
677325	325	SWEETHEART	PAPER PORTION CUP PLEATED 2.5 OZ	5000/CS	CS
677250	250	SWEETHEART	PAPER PORTION CUP PLEATED 2.5 OZ	5000/CS	CS
677200200	200	SWEETHEART	PAPER PORTION CUP PLEATED 2 OZ	5000/CS	CS
6771251	125	SWEETHEART	PAPER PORTION CUP PLEATED 1.25 OZ	5000/CS	CS
67701002	100	SWEETHEART	PAPER PORTION CUP PLEATED 1 OZ	5000/CS	CS
677075	75	SWEETHEART	PAPER PORTION CUP 3/4 OZ	5000/CS	CS
67520	20JL	DART	LID #20 VENTED FOR 12J12,6SJ12	1000/CS	CS
677500	8SJ20	DART	FOOD CONTAINER SQUAT FOAM 8 OZ. <b>A</b>	1000/CS	CS
677612	6SJ12	DART	FOOD CONTAINER SQUAT FOAM 6 OZ. <b>A</b>	1000/CS	CS
675464	4J6	DART	FOOD CONTAINER SQUAT FOAM 4 OZ. <b>A</b>	1000/CS	CS
6771620	16MJ20	DART	FOOD CONTAINER SQUAT FOAM 16 OZ. <b>A</b>	1000/CS	CS
6771220	12SJ20	DART	FOOD CONTAINER SQUAT FOAM 12 OZ. <b>A</b>	500/CS	CS
6778501	85HT1	DART	FOAM HINGED LID CONTAINERS, MEDIUM SINGLE COMPARTMENT	200/CS	CS
6778503	85HT3	DART	FOAM HINGED LID CONTAINERS, MEDIUM 3-COMPARTMENT	200/CS	CS
677951	95HT1	DART	FOAM HINGED LID CONTAINERS, LARGE SINGLE COMPARTMENT	200/CS	CS
677953	95HT3	DART	FOAM HINGED LID CONTAINERS, LARGE 3-COMPARTMENT	200/CS	CS
677601	60HT1	DART	FOAM HINGED LID CONTAINERS, 6" SANDWICH	500/CS	CS
677345	LUR345	SWEETHEART	CLEAR PORTION CUP LIDS FOR UR345, UR4, UR55	2500/CS	CS
677020202	LUR2H	SWEETHEART	CLEAR PORTION CUP LIDS FOR UR2H	2500/CS	CS
677010101	LUR1	SWEETHEART	CLEAR PORTION CUP LIDS FOR UR050, UR1	5000/CS	CS

FOOD SERVICE



## FOOD SERVICE



**A**

## FOOD TAKE OUT PANS

ITEM NO.	MFG NO.	MFG	PRODUCT DESCRIPTION	PACKED
6774564001	45640B	ALCAN	HALF SIZE DEEP STEAMTABLE PAN	100/CS
6774607001	46070A	ALCAN	FULL SIZE DEEP STEAMTABLE PAN	50/CS
6775553001	55440A	ALCAN	ALUMINUM LID FOR #46070A	50/CS
6775553001	55530B	ALCAN	ALUMINUM LID FOR #45640B	100/CS
67751643001	516430D	ALCAN	ALUMINUM 9" ROUND PAN	500/CS
67751242501	512425D	ALCAN	ALUMINUM 7" ROUND PAN	500/CS
67748743401	487434LR	ALCAN	ALUMINUM 3 COMPARTMENT OBLONG PAN WITH FOIL BOARD LID	250/CS

## BAKERY PAPERS & LINERS

ITEM NO.	MFG NO.	MFG	PRODUCT DESCRIPTION	PACKED
67715	15CX	DIXIE FOODSERVICE	FLUTED BAKING CUPS <b>A</b>	10000/CS
6778	T8	DIXIE FOODSERVICE	TISSUE PAC BAKERY TISSUES 8 X 10-3/4	10000/CS
6772401	24Q	DIXIE FOODSERVICE	PAN LINER	1000/CS
677101010	L010	DIXIE FOODSERVICE	PAN LINER LIFTOFF GREASE PROOF, 16-3/8" X 24-3/8"	1000/CS
6771501	T15	DIXIE FOODSERVICE	TISSUE PAC BAKERY TISSUES 15 X 10-3/4	60000/CS
6776	T6	DIXIE FOODSERVICE	BAKERY TISSUE 6" X 10-3/4"	10000/CS

## ALUMINUM FOIL

ITEM NO.	MFG NO.	MFG	PRODUCT DESCRIPTION	PACKED
677121501	1215ROYME	ALCAN	ROYALE ALUMINUM FOIL STANDARD ROLL	12/1000'
677185701	1857	ALCAN	ALUMINUM FOIL STANDARD ROLL, SAFETY EDGE	18/500'
677181701	1817	ALCAN	ALUMINUM FOIL STANDARD ROLL, SAFETY EDGE	18/1000'
677121701	1217	ALCAN	ALUMINUM FOIL STANDARD ROLL	12/1000'
677910501	9105	ALCAN	ALUMINUM FOIL POP-UP SHEETS, 9" X 10.75" 6/500 CT	3000/CS
677120501	1205	ALCAN	ALUMINUM FOIL POP-UP SHEETS, 12" X 10.75" 6/500 CT	3000/CS
677120201	1202	ALCAN	ALUMINUM FOIL POP-UP SHEETS, 12" X 10.75" 12/200 CT	2400/CS
677185101	1851	ALCAN	ALUMINUM FOIL HEAVY DUTY ROLL, SAFETY EDGE	18/500'
677181101	1811	ALCAN	ALUMINUM FOIL HEAVY DUTY ROLL, SAFETY EDGE	18/1000'

**FOOD SERVICE**



**FOOD WRAP**

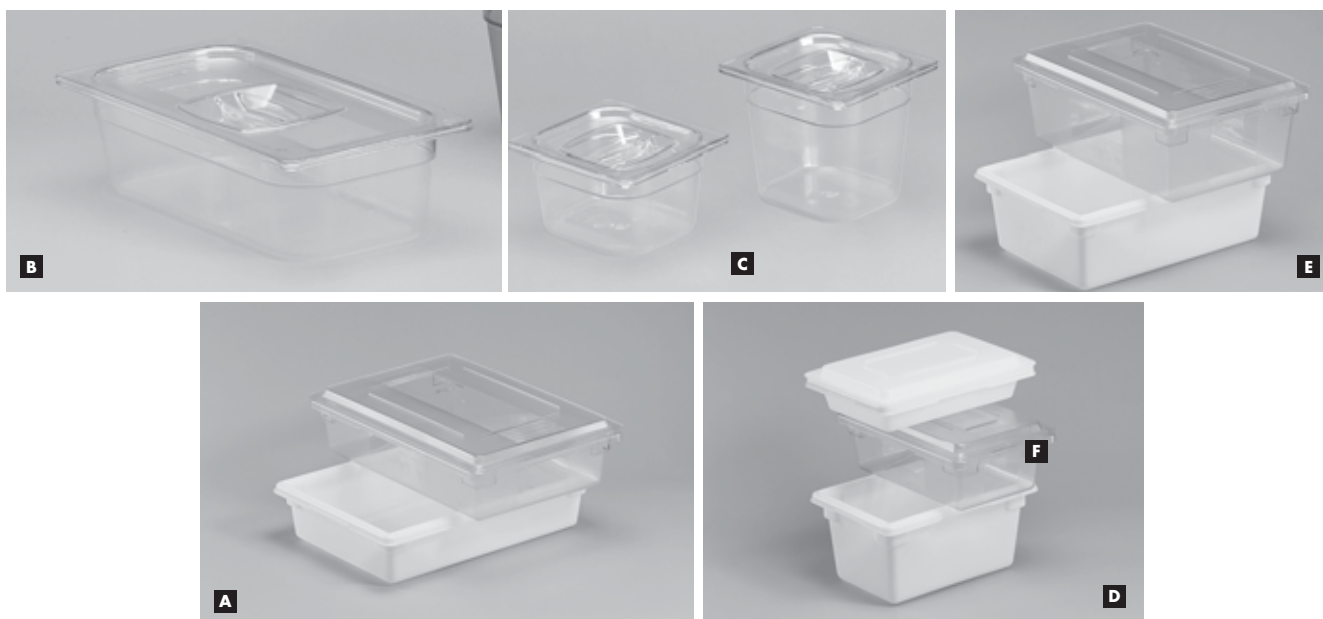
ITEM NO.	MFG NO.	MFG	PRODUCT DESCRIPTION	PACKED
677080801	S8	DIXIE FOODSERVICE	SATIN PAC CLEAR DELI WRAP 8X10 3/4	10000/CS
677101001	S10	DIXIE FOODSERVICE	SATIN PAC CLEAR DELI WRAP 10X10 3/4	10000/CS
67766	RW66	DIXIE FOODSERVICE	RITE WRAP 6X10 3/4 12/500 CT	6000/CS
677126	RW126	DIXIE FOODSERVICE	RITE WRAP 12X10 3/4 12/500 CT	6000/CS
6771061	RW106	DIXIE FOODSERVICE	RITE WRAP 10X10 3/4 12/500 CT	6000/CS
677018	KL18	DIXIE FOODSERVICE	KOLD-LOK/SNOWFIBRE FREEZER PAPER, 18" <b>A</b>	1/1100'
6770202	2HOSTESS	DIXIE FOODSERVICE	HOSTESS WAXED PAPER, 12/250FT. <b>B</b>	12/250'
6771508	G8	DIXIE FOODSERVICE	GLENVALE DELI WRAP 8X10 3/4 12/500 CT	6000/CS
6771501	G15	DIXIE FOODSERVICE	GLENVALE DELI WRAP 15X10 3/4 12/500 CT	6000/CS
6771201	G12	DIXIE FOODSERVICE	GLENVALE DELI WRAP 12X10 3/4 12/500 CT	6000/CS
6771001	G10	DIXIE FOODSERVICE	GLENVALE DELI WRAP 10X10 3/4 12/500 CT	6000/CS
677000221	22	CLOROX	GLAD CLING WRAP, 300 FT ROLL	12/300 FT
67786	RW86	DIXIE FOODSERVICE	DELI WRAP, MED, 8"X10-3/4", RITE-WRAP <b>D</b>	6000/CS
677156	RW156	DIXIE FOODSERVICE	DELI WRAP, MED, 15"X10-3/4", RITE-WRAP <b>D</b>	6000/CS
277242	PW242	ANCHOR PACKAGING	PURITY WRAP, CUTTER BOX FILM	24"X2000'
277182	PW182	ANCHOR PACKAGING	PURITY WRAP, CUTTER BOX FILM	18"X2000'
277122	PW122	ANCHOR PACKAGING	PURITY WRAP, CUTTER BOX FILM	12"X2000'
677242	CW242	ANCHOR PACKAGING	CRYSTAL WRAP, CUTTER BOX FILM	24"X2000'
677182	CW182	ANCHOR PACKAGING	CRYSTAL WRAP, CUTTER BOX FILM	18"X2000'
677122	CW122	ANCHOR PACKAGING	CRYSTAL WRAP, CUTTER BOX FILM	12"X2000'

**ZIPLOC COMMERCIAL RESEALABLE BAGS**

ITEM NO.	MFG NO.	MFG	PRODUCT DESCRIPTION	SOLD BY	PACKED
27794600	94600	JOHNSON DIVERSY	ZIPLOC SANDWICH BAG 500/1.2MIL <b>C</b>	500/1.2MIL	CS
27794601	94601	JOHNSON DIVERSY	ZIPLOC QT. STORAGE 500/1.75MIL <b>C</b>	500/1.75MIL	CS
27794603	94603	JOHNSON DIVERSY	ZIPLOC 2 GALLON STORAGE 100/1.75MIL <b>C</b>	100/1.75MIL	CS
27794602	94602	JOHNSON DIVERSY	ZIPLOC 1 GALLON STORAGE 250/1.75MIL <b>C</b>	250/1.75MIL	CS
27794604	94604	JOHNSON DIVERSY	ZIPLOC 1 GALLON FREEZER 250/2.7MIL <b>C</b>	250/2.7MIL	CS



**FOOD SERVICE**



**X-TRA COLD PANS-FOOD BOXES & LIDS**

ITEM NO.	MFG NO.	MFG	PRODUCT DESCRIPTION	PACKED
<b>X-TRA COLD FOOD PANS</b>				
677121	121P CLE	RUBBERMAID	X-TRA COLD PAN COVER FOR 117P, 118P	EA
677108	108P CLE	RUBBERMAID	X-TRA COLD LID FOR 105P, 106P PANS	EA
677106	106P CLE	RUBBERMAID	X-TRA COLD FOOD PAN-1/6 SIZE 2-1/2 QT <b>C</b>	EA
677118	118P CLE	RUBBERMAID	X-TRA COLD FOOD PAN-1/3SIZE 5-3/8 QT <b>B</b>	EA
677117	117P CLE	RUBBERMAID	X-TRA COLD FOOD PAN-1/3SIZE 4 QT <b>B</b>	EA
677125	125P CLE	RUBBERMAID	X-TRA COLD FOOD PAN-1/2SIZE 9-1/3 QT	EA
677124	124P CLE	RUBBERMAID	X-TRA COLD FOOD PAN-1/2 SIZE 6-3/8 QT	EA
677105	105P CLE	RUBBERMAID	X-TRA COLD FOOD PAN -1/6 SIZE 1-2/3 QT <b>C</b>	EA
677128	128P CLE	RUBBERMAID	X-TRA COLD PAN COVER FOR 124P, 125P	EA
<b>FOOD BOXES AND LIDS</b>				
<b>18 X 26</b>				
6773308	3308 CLE	RUBBERMAID	6" DEEP FOOD BOX CLEAR 8.5 GAL <b>A</b>	EA
6773508	3508 WHI	RUBBERMAID	6" DEEP FOOD BOX WHITE 8.5 GAL <b>A</b>	EA
6773300	3300 CLE	RUBBERMAID	9" DEEP FOOD BOX CLEAR 12.5 GAL <b>F</b>	EA
6773500	3500 WHI	RUBBERMAID	9" DEEP FOOD BOX WHITE 12.5 GAL <b>F</b>	EA
6773301	3301 CLE	RUBBERMAID	15" DEEP FOOD BOX CLEAR 21.5 GAL	EA
6773501	3501 WHI	RUBBERMAID	15" DEEP FOOD BOX WHITE 21.5 GAL	EA
<b>18 X 12</b>				
6773307	3307 CLE	RUBBERMAID	3-1/2" DEEP FOOD BOX CLEAR <b>D</b>	EA
6773507	3507 WHI	RUBBERMAID	3-1/2" DEEP FOOD BOX WHITE <b>D</b>	EA
6773309	3309 CLE	RUBBERMAID	6" DEEP FOOD BOX CLEAR <b>E</b>	EA
6773509	3509 WHI	RUBBERMAID	6" DEEP FOOD BOX WHITE <b>E</b>	EA
<b>LIDS FOR ABOVE FOOD BOXES</b>				
6773302	3302 CLE	RUBBERMAID	LID FOR 3300, 3301, 3306, 3308	EA
6773310	3310 CLE	RUBBERMAID	LID FOR 3304, 3307, 3309 CLEAR	EA
6773502	3502 WHI	RUBBERMAID	LID FOR 3500, 3501, 3506, 3508	EA
6773510	3510 WHI	RUBBERMAID	LID FOR 3504, 3507, 3509 WHITE	EA

**FOOD SERVICE**



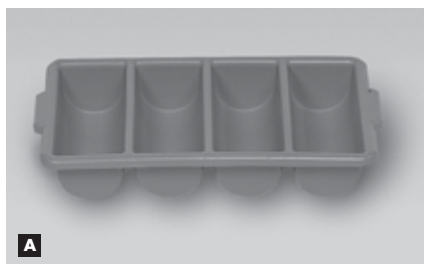
**MEASURING CONTAINERS - ROUND STORAGE CONTAINERS - SQUARE SPACE - SAVING CONTAINERS**

ITEM NO.	MFG NO.	MFG	PRODUCT DESCRIPTION	PACKED
67732101	3210 CLE	RUBBERMAID	BOUNCER 1 CUP MEASURING CUP	EA
6753215	3215 CLE	RUBBERMAID	1/2 QT MEASURING CUP, CLEAR	EA
6753216	3216 CLE	RUBBERMAID	1 QT MEASURING CUP, CLEAR	EA
6753217	3217 CLE	RUBBERMAID	2 QT MEASURING CUP, CLEAR	EA
6753218	3218 CLE	RUBBERMAID	4 QT MEASURING CUP ,CLEAR	EA
6775720	5720-24 CLE	RUBBERMAID	ROUND STORAGE CONTAINER 2 QT CLEAR <b>A</b>	EA
6775721	5721-24 CLE	RUBBERMAID	ROUND STORAGE CONTAINER 4 QT CLEAR <b>B</b>	EA
6775722	5722 YEL	RUBBERMAID	LID F/5720 & 5721 CONTAINERS <b>D</b>	EA
6775723	5723-24 CLE	RUBBERMAID	ROUND STORAGE CONTAINER 6 QT CLEAR <b>C</b>	EA
6775725	5725 YEL	RUBBERMAID	LID FOR 5723, 5724 YELLOW <b>E</b>	EA
6775726	5726-24 CLE	RUBBERMAID	ROUND STORAGE CONTAINER 12 QT CLEAR	EA
6775728	5728-24 CLE	RUBBERMAID	ROUND STORAGE CONTAINER 22 QT CLEAR	EA
572924	5729-24 CLE	RUBBERMAID	ROUND STORAGE CONTAINER CLEAR	EA
6775730	5730 YEL	RUBBERMAID	LID F/5726, 5727, 5728 YELLOW	EA
6776302	6302 CLE	RUBBERMAID	CLEAR 2QT SPACE SAVER CONTAINER <b>F</b>	EA
6776304	6304 CLE	RUBBERMAID	CLEAR 4 QT SPACE SAVER CONTAINER <b>F</b>	EA
6776306	6306 CLE	RUBBERMAID	CLR 6 QT SPACE SAVER CONTAINER <b>F</b>	EA
6776308	6308 CLE	RUBBERMAID	CLR 8 QT SPACE SAVER CONTAINER <b>F</b>	EA
6776509	6509 WHI	RUBBERMAID	LID F/ 2, 4, 6, & 8 QT	EA

FOOD SERVICE

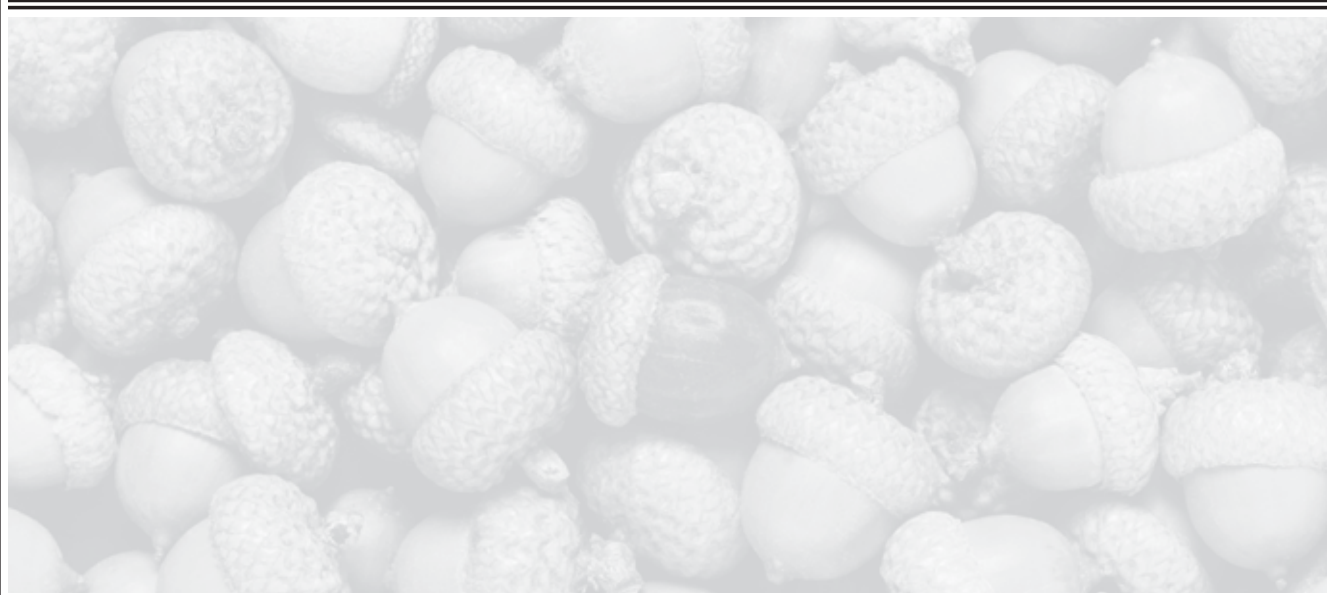


**FOOD SERVICE**



**PITCHERS - MUGS - BEVERAGE - CUTLERY DISPENSERS**

ITEM NO.	MFG NO.	MFG	PRODUCT DESCRIPTION	SOLD BY
6773362	3362 GRA	RUBBERMAID	GRAY CUTLERY BIN <b>A</b>	EA
<b>Dispensers</b>				
6771685	1685 ORG	RUBBERMAID	WATER COOLER, 5 GALLON - ORANGE 19" HIGH <b>B</b>	EA
6771610	1610 ORG	RUBBERMAID	WATER COOLER, 10 GALLON - ORANGE, 20.8" HIGH <b>C</b>	EA
67733582	3358 CLE	RUBBERMAID	BEVERAGE DISPENSER 3 GALLON - CLEAR PLASTIC	EA
6778257	8257-UN WHI	RUBBERMAID	UNIVERSAL CUP HOLDER FOR 4 OZ AND 7 OZ CUPS	EA
67718481	1848 BLU	RUBBERMAID	ICE CHEST 48 QUART - BLUE	EA
<b>Mugs / Pitchers</b>				
6773433	3433 CLE	RUBBERMAID	16 OZ BOUNCER MUG - CLEAR	EA
6773336	3336 CLE	RUBBERMAID	BOUNCER PITCHER 32 OZ - CLEAR <b>D</b>	EA
67733381	3338 CLE	RUBBERMAID	BOUNCER PITCHER 60 OZ - CLEAR <b>D</b>	EA
677333972	3339 CLE	RUBBERMAID	BOUNCER PITCHER 72 OZ - CLEAR <b>D</b>	EA
677306287	3062-87 ALM	RUBBERMAID	ECONOMY PITCHER 2.25 QUART CLEAR - ALMOND	EA
<b>Bus Boxes</b>				
6773349	3349 GRA	RUBBERMAID	BUS BOX 15" X 20" X 5" - GRAY	EA
67733512	3351 GRA	RUBBERMAID	UNDIVIDED BUS BOX - GRAY 21-1/2 X 17-1/8 X 7	EA



**FOOD SERVICE**



**GLASSWARE CLEANERS - SPECIALTY ITEMS**

ITEM NO.	MFG NO.	MFG	PRODUCT DESCRIPTION	SOLD BY
6008401100	8401100	ARM & HAMMER	ARM & HAMMER FRIDGE-N-FREEZER PACK 12/16 OZ	CS
60090221	90221	JOHNSON DIVERSY	BEER CLEAN GLASS CLEANER (MANUAL) 100PP <b>A</b>	CS
60090223	90223	JOHNSON DIVERSY	BEER CLEAN SANITIZER 100PP	CS
60090224	90224	JOHNSON DIVERSY	BEER CLEAN LOW SUDS GLASS CLEANER 100PP <b>B</b>	CS
60091206	91206	JOHNSON DIVERSY	MR MUSCLE OVEN CLEANER 6/19 OZ <b>D</b>	CS
60091208	91208	JOHNSON DIVERSY	MR MUSCLE OVEN CLEANER 6/32 OZ TRIGGER <b>G</b>	CS
60091209	91209	JOHNSON DIVERSY	MR MUSCLE FRY BOIL-OUT 36/2 OZ <b>C</b>	CS
60004250	4250	RECKITT BENCKISER	EASY-OFF OVEN & GRILL CLEANER 6/24 OZ	CS
60074017	74017	RECKITT BENCKISER	EASY-OFF FUME FREE MAX 6/24 OZ <b>E</b>	CS
60074377	74377	RECKITT BENCKISER	EASY-OFF OVEN & GRILL CLEANER 4/1GALLON <b>F</b>	CS
60074379	74379	RECKITT BENCKISER	EASY-OFF LIME REMOVER 4/1 GALLON	CS
60076520	76520	RECKITT BENCKISER	EASY-OFF MICROWAVE WIPES	CS
6002060	2060	SYS	SYSTEM CLEAN OVEN CLEANER	CS
67774379	74389	RECKITT BENCKISER	LYSOL NO RINSE SANITIZER 4/1 GALLON	CS
60074411	74411	RECKITT BENCKISER	LYSOL ANTIBACTERIAL KITCHEN CLEANER RTU	CS
60011020	A110-20	AMREP	OVEN & GRILL CLEANER	CS

FOOD SERVICE

**FOOD SERVICE**



**KITCHEN CLEANERS**

ITEM NO.	MFG NO.	MFG	PRODUCT DESCRIPTION	SOLD BY
6002979558	2979558	JOHNSON DIVERSY	AUTO DISHWASHING DETERGENT, SUNLIGHT 100/1.5 OZ	CS
60000001	1	CLOROX	SOS POT & PAN DETERGENT COMMERCIAL SOLUTION 4/128 OZ	CS
60036001	36001	SIMPACTLE GREEN	FOOD SERVICE DISINFECTANT CLEANER 4/1 GALLON	CS
60076493	76493	RECKITT BENCKISER	ELECTRASOL AUTO DISH DETERGENT LEMON POWDER 5/110 OZ	CS
600435145	CB435145	JOHNSON DIVERSY	DISHWASHING LIQUID ULTRA SUNLIGHT 20/14.7OZ	CS

**DISHWASHING DETERGENTS**

ITEM NO.	MFG NO.	MFG	PRODUCT DESCRIPTION	SOLD BY
60001075	37170	PROCTOR & GAMBLE	JOY LEMON SCENT 6/50OZ <b>A</b>	CS
60002301	2301	PROCTOR & GAMBLE	JOY 5 GALLON PAIL DISHWASHING 5 GL <b>A</b>	EA
60002302	2302	PROCTOR & GAMBLE	JOY DISHWASHING 3/1 GALLON <b>A</b>	CS
60002613	2613	PROCTOR & GAMBLE	DAWN ORIGINAL 3/1 GALLON <b>B</b>	CS
60002612	37168	PROCTOR & GAMBLE	DAWN REGULAR SCENT 6/50 OZ <b>B</b>	CS
60002611	2611	PROCTOR & GAMBLE	DAWN ORIGINAL 5 GALLON PAIL <b>B</b>	EA
60002619	2619	PROCTOR & GAMBLE	DAWN LEMON 3/1 GALLON <b>C</b>	CS
6008047	37169	PROCTOR & GAMBLE	DAWN LEMON SCENT 6/50 OZ <b>C</b>	CS
602320181	320181	COLEGATE PALMOLIVE	PALMOLIVE PLUS DISH DETERGENT 12/850 ML <b>G</b>	CS
60246128	46128	COLEGATE PALMOLIVE	PALMOLIVE DISHWASH LIQUID 12/25 OZ <b>E</b>	CS
60246114	46114	COLEGATE PALMOLIVE	ULTRA PALMOLIVE 20/14.7 OZ <b>E</b>	CS
6024910	4910	COLEGATE PALMOLIVE	DISHWASHING LIQUID, PALMOLIVE PLUS 4/1 GALLON	CS
6021410	1410	COLEGATE PALMOLIVE	DISHWASHING LIQUID, PALMOLIVE PLUS 72/3.75 OZ <b>G</b>	CS
60004911	4911	COLEGATE PALMOLIVE	DISHWASHING LIQUID, PALMOLIVE PLUS 5 GALLON <b>G</b>	PL
60004922	4922	COLEGATE PALMOLIVE	DISHWASHING LIQUID, COLGATE, LOTION 4/1 GALLON	CS
60147928	47928	COLEGATE PALMOLIVE	ANTIBACTERIAL DISH LIQUID 12/25 OZ <b>F</b>	CS
60000620	620	PROCTOR & GAMBLE	ULTRA IVORY 25/12.6 OZ	CS
60002101	2101	PROCTOR & GAMBLE	CREAM SUDS WITH PHOS 50 LB CTN	CS
60002120	2120	PROCTOR & GAMBLE	CREAM SUDS WITH OUT PHOS 25 LB	CS
60000801	801	PROCTOR & GAMBLE	CASCADE AUTO 24/20 OZ <b>D</b>	CS
60234953	34953	PROCTOR & GAMBLE	CASCADE POWDER 6/85 OZ <b>D</b>	CS

**FOOD SERVICE**



**FOOD SERVICE TOWELS - DISPOSABLE FOOD HANDLING GLOVES - BOUFFANT - HAIR NETS**

ITEM NO.	MFG NO.	MFG	PRODUCT DESCRIPTION	SOLD BY
67713387	13387	CLOROX	HANDI WIPES 24/6 PACK <b>B</b>	CS
629390	390	GALAXY	32 X 50 DISPOSABLE APRON 100/DISPENSER PACK	DP
6777387	7387W21	IMPACT	SPUN BONDED HAIR NET, WHITE, LARGE 100/BAG <b>A</b>	BG
677810	810	GEORGIA PACIFIC	TABLE COVER ROLL 40" X 300'/CS - WHITE	CS
6778900	8900	IMPACT	SILICONE OVEN MITT	EA



**FOOD SERVICE**